



www.jessaminechamber.com Vol. 3 • No. 1

JESSAMINE CHAMBER CONNECTION

[THURSDAY, APRIL 30, 2009]

LJC advancing members, county

By Nancy Stone
Chamber of Commerce Director

More than 100 people have been fortunate enough to have participated in the Leadership Jessamine County program. It started more than 12 years ago by a group of dedicated leaders that realized Jessamine County needed informed and well-trained leaders if the county was to advance in a progressive fashion. The organizers understood that those potential leaders were destined to replace the stalwarts that had historically given so much of themselves. Therefore the Leadership Jessamine County program was established to give the men and women a good understanding of where we have been and enlighten them on current trends and growth issues facing the county.

Each year the board of directors establishes a schedule of educational days that cover such issues as education, governance, health, arts, history and environment. Experts and knowledgeable persons lead the full-day sessions. Invariably, members of the group are amazed at the uniqueness of the region and astounded that there were things about the county they did not know.

If you are interested in attending this program, contact the Jessamine County Chamber of Commerce for more information. The Chamber phone number is 859-887-4351. A copy of the application is available at www.jessaminechamber.com.



LJC 2009-2010 schedule

Sept. 8, 2009
Orientation Night

Sept. 11 - Sept. 13, 2009
Retreat at KY Leadership Center in Jabez, Ky.

Sept. 24, 2009
Leadership Challenge Course

Oct. 8, 2009
NaturalResources/History/
Historic Preservation

Nov. 12, 2009
Education, Human Services Day

Dec. 10, 2009
Professional Development Day

Jan. 5, 2010
Local Government Day

Feb. 11, 2010
Kentucky Legislature Day

March 11, 2010
Law and Justice System Day

April 8, 2010
Economic Development Day

May 13, 2010
Professional Development Day

June 3, 2010
Graduation

All LJC classes are during the day with the exception of orientation, local government day, professional development day in May and graduation. For more information, call 859-887-4351.

COMMERCE CALENDAR

MAY 2009

Friday, May 1: Kentucky Bank will hold its grand opening at noon.

Thursday, May 14: The Chamber will hold a luncheon sponsored by Members Heritage Federal Credit Union from 12:30 p.m. to 1:30 p.m. at Wesley Village.

Friday, May 15 and Saturday May 16: The Wine & Vine Festival

Wednesday, May 20: Haute Couture will hold its grand opening at noon.

JULY 2009

Friday, July 10: The County Judge-Executive Annual Cookout will be held from 11:30 a.m. to 2 p.m. on the lawn of the county courthouse.

AUGUST 2009

Thursday, Aug. 27: The 4th Annual Grape Stomp Off will be held at Chrisman Mill Winery. (Time to be announced at a later date.)

Friday, Aug. 28: All God's Children Golf Tournament

New Chamber members

Cress's Sales & Mfg.
Connie Cress 606-679-2990

Courtesy Pontiac Acura
Kim White 859-272-8900

W. Pulaski County Water District
Amy Jo Kelley 606-679-1569

Butler Distributing Inc.
Brent Butler 859-229-1198

Bluegrass Cardiology, PSC
Dr. Glenn Morris 859-624-1826

White, Greer & Maggard
LeAnn Byrnside 859-881-2050

Scott and Jonah, PSC
Susan Belschner 502-875-2468

Cumberland Eagle Foods, Inc.
Bobby Upchurch 606-679-5202

Jessamine County: One of the best places to live

By Nancy Stone

Chamber of Commerce Director

Jessamine County and the region have known for some time that the county is a beautiful and exciting place to live, but now, thanks to some extraordinary publicity on a national level, it's official.

Wilmore is the "Most Affordable Suburb in Kentucky" according to Business Week. In making the recent choice, the publication said Wilmore is the "most affordable suburb near the largest city with the highest quality of life" in Kentucky.

The criteria used to make the determination included: towns located within 25 miles of the largest city of the state, short commutes, low pollution, high student test scores and affordability of housing. The data used was based on the 2000 Census taken before Louisville merged with Jefferson County.

Last year Money magazine ranked

Nicholasville as the "No. 1 small city in the country for affordable housing." That designation has placed Nicholasville homeowners in a very enviable competitive position in the current depressed housing market. Although new home starts are down in the area, home sales have not felt the radical decline felt by other communities in Kentucky.

The welcome publicity garnered from the Wilmore and Nicholasville honors has raised awareness of the rolling bluegrass topography, breathtaking scenery, good schools and strong sense of community in this centrally located county of Kentucky.

Jessamine County is situated south of Lexington and Fayette County. Although considered one of the fastest growing counties in the state, it is ranked eight from the bottom in terms of land mass.

And we can now boast it is one of the best places in the country to live.



Left: Money magazine ranked Nicholasville as the "No. 1 small city in the country for affordable housing." The Money article ranked Nicholasville with 25 cities across the United States. Information from the article was obtained using actual sales collected from county and municipal assessors' offices.

Below: Wilmore, which is home to Asbury College, was named the "Most Affordable Suburb in Kentucky" by Business Week. According to Business Week's breakdown of Wilmore, the median household income is \$41,512, and the unemployment rate is 4.5 percent.



Jessamine Chamber of Commerce

Nancy Stone, Executive Director • Myrna Spratt, Administrative Assistant

2009 - 2010 BOARD OF DIRECTORS

• Christopher Horne
President, Horn Engineering

• Robert Garrison
Garrison Investments

• Chris Stansbury
*Moynahan, Mooney, Irvin
and Stansbury*

• Randall Chewning
State Farm Insurance

• Linda Slagle
High Bridge Spring Water

• Lu Young
Board of Education

• Brad Lewallen
First Southern National Bank

• Tobin Jenkins
Edward Jones

• Ruth Vahle
Jessamine County schools

• Dave Carlstedt
City of Wilmore

• David Latham
Triad Insurance

• Sandy Adams
Zaxby's

• Jonah Mitchell
Jonah Mitchell Real Estate

• Stephen Boyd
Boyd CPA

• Denise Nelson
Chrisman Mill Winery

• Jim Bailey
Farmers Bank

• Lib Wilson
AFLAC

• Ben Brown
United Bank

• Sherrie Bryant
Walmart

**The Jessamine County
Chamber of Commerce**
508 North Main Street
Suite A
Nicholasville, KY 40356
859-887-4351
www.jessaminechamber.com



FREE LOCAL TRUCK!

* (Pay 2 month advance on unit for rental truck)

STORAGE MAX

132 Imperial Way, Nicholasville

885-STOR • 885-7867

New Units Now Available!
Climate Control • Boat & RV Parking
24 Hour Surveillance • Computerized Gate Access
On-Site Management

**Maximum Storage, Maximum Security
without a Maximum Price!**

Visit us on the Web at www.storage maxky.com



Identity theft on the rise

Stealing identities has never been easier, thanks to today's increasingly sophisticated technology-in particular, easy success to high-quality computer software, scanners and printers. Common sense is your best protection against identity theft, and there are several things you need to know.

Protecting your identity

There are several things you can do to reduce the chance that you will become a victim:

- Safeguard your checkbook and supply of checks.
- Don't put bills paid with checks inside your mail box for postal pickup.
- Guard your identity. Keep bank account numbers, PIN numbers and Social Security Numbers out of your pocketbook and wallet.
- Destroy (shred) financial documents such as old bank statements or credit offers that contain account numbers or account information.
- Always write checks in non-erasable ink. Use black or blue ink only.
- Use caution when providing financial information over the phone or Internet.
- Review your bank statements or returned checks to find any unauthorized transactions occurred.

What you can do if your identity has been stolen

If you become a victim of identity theft or fraud, act immediately to minimize the damage to your personal funds and financial information.

Contact your bank regarding the ID theft on your accounts and your ATM/Debit card. Then immediately come into the bank to review your account for any outstanding checks, close your

account and open a new account.

Contact the fraud departments of the three major credit bureaus:

- Equifax: www.Equifax.com
To order your report, call 800-685-1111 or write:
P.O. Box 740241, Atlanta GA 30374-0241
To report fraud, call: 800-525-6285 and write:
P.O. Box 740241, Atlanta, GA 30374-0241
- Experian: www.experian.com
To order your report, call: 888-EXPERIAN (397-3742) or write:
P.O. Box 2002, Allen, Texas 75013
To report fraud. Call: 888-EXPERIAN (397-3742) and write:
P.O. Box 9530, Allen, Texas 75013
- Trans Union: www.transunion.com
To order your report, call: 800-888-4213 or write:
P.O. Box 100, Chester, PA 19022
To report fraud, call: 800-680-7289 and write:
Fraud Victim Assistance Division, P.O. Box 6790, Fullerton, CA 92634

File a police report and get a copy of the report to be used if needed to show proof of the crime.

Learn more about identity theft

Contact the Federal Trade Commission (FTC) to file a complaint at 1-877-IDTheft (877-438-4338) or online at www.consumer.gov/idtheft.

You may want to contact the US Postal Inspection Service at www.usps.com/postalinspectors or the Social Security Administration at 800-629-0271.

Editor's note: Reprinted by permission of Farmers Bank of Jessamine County.

Chamber will host SBDC Core Four Business Planning Course

Beginning Thursday, April 30, the Small Business Development Center will present a series of work sessions at the Jessamine County Chamber of Commerce, for entrepreneurs who want to develop a business idea and grow the details.

The sessions will address what entrepreneurs really need to know about planning a successful business.

The 5-week session is entitled Core Four Business Planning Course and are scheduled from 3 p.m. to 6 p.m., each Thursday, beginning April 30 and ending May 28 at the Chamber location, 508 N. Main St. A fee of

■ For more information on the Small Business Development Center, or to register for the workshop, contact Brenda Jones by calling 859-257-7666 or via e-mail at bmjone2@uky.edu.

\$100 will be charged and covers all sessions for five weeks and the planning course book. Shirie Mack, Director of Bluegrass SBDC, will serve as instructor for the five sessions.

For more information on the Small Business Development Center, or to register for the workshop, contact Brenda Jones at 859-257-7666 or email @ bmjone2@uky.edu.

*We welcome you to become
a member and help us make
Jessamine County an
even greater place to live and work!*



SOUTHLAND
Love God / Love People

At Southland Christian Church, we simply want to love God and love people. Our ministries and programs are designed to bring people into a deeper relationship with God and with others to create a loving, healthy community. If you're looking for a place to find real people, with real lives, who love a real God, we invite you to worship with us.

WORSHIP SERVICES

SATURDAY

5:30 p.m.

SUNDAY

8:30 a.m.
10 a.m.

10:10 a.m.
11:30 a.m.

6:08 p.m.

www.SouthlandChristian.org

5001 Harrodsburg Road

www.MySouthland.org

859-224-1600

*Jessamine County YMCA ...
Proudly serving
Jessamine County
since 1977.*

220 East Maple Street
Nicholasville, KY 40356
859-885-5013
www.ymcaofcentralky.org



**YMCA
Of Central
Kentucky**

Jessamine Business Women's Network up and running

By Nancy Stone

Chamber of Commerce Director

In mid 2008, two energetic young professional women came up with the idea of putting together a grassroots based women's group of professional women to support and learn from each other.

Thus was born the Jessamine Business Women's Network, the brainchild of Gina Boling of My Excellent Assistant and Cheryl Eadens of AB Dick/KopyKat, Inc. The two are Ambassadors for the Jessamine County Chamber of Commerce and persuaded the organization to host the group.

The first meeting of Jessamine Business Women was held at Panera Bread Co., then moved to the Chamber in September 2008 with nine women present. Word spread quickly with current membership at 36, an email list of 75 and 27 women present at the February meeting.

When asked to define the purpose of

the group, Boling explained the Women's Network intends to encourage women that are in business or have started a business to mentor each other and present themselves as credible business experts. She feels the group provides a community service through the Biz-toBiz Breakfast that educate all small business professionals in issues faced by business professionals, by providing a unique outlet to raise awareness of each woman's profession, and by offering a venue that encourages the participants to support each other.

The Women's Network meets the second Thursday of each month in the Chamber conference room. The breakfast meeting begins at 8:30 a.m. and concludes at 9:45 a.m. All professional women are invited. There is no cost.

If you are interested in getting more information on Jessamine Business Women's Network contact Boling at 859-489-6034 or through email at gina@myexcellentassistant.com.



More than 27 women were present at the February Jessamine Business Women meeting held at the Jessamine County Chamber of Commerce. The first meeting of Jessamine Business Women was held at Panera, then moved to The Chamber in September 2008.



- ✓ Pharmacy
- ✓ Home Medical Equipment
- ✓ Diabetes Shoppe®
- ✓ Home Respiratory Equipment

930 S. Main Street, Nicholasville
(859) 887-2841
www.prescriptionpad.biz

MONEY TIGHT?



LEE TIRE

LEE TIRE of Nicholasville

Vast inventory of used tires including truck, SUV and performance.
Most sizes from 12" to 20" in stock. Competitive prices on new tires.

Call to ask about our mower tires.



Matt Jones, Derrick Jones, and Justin Ray,

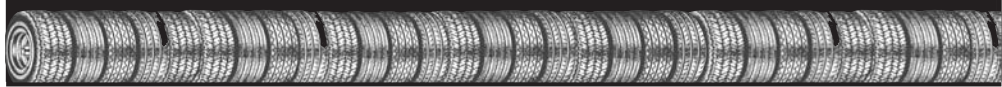
3005 Park Central

NICHOLASVILLE, BEHIND THE BOOT STORE

881-TIRE (8473)

1029 Eastland Dr. 455-TIRE (8473)

LEXINGTON



Chamber's conference room receives fresh look

By Nancy Stone

Chamber of Commerce Director

Thanks to the generosity and good will of Floor Coverings International and Chamber Ambassador, Sheryl Eadens of ABDick/Kopy Kat, Inc., the Jessamine County Chamber of Commerce has re-carpeted its much used conference room. Floor Coverings International, located at 1060 Elizabeth St., is a member of the chamber and an active participant in chamber events. Owner and president, Jonathan Wilk, responded to the Chamber's needs when approached by Eadens, and worked with chamber staff to make the process amazingly fuss free.

Our sincere thanks to Floor Coverings International for their generosity and for providing a willing and talented staff that worked to make the project successful.

The Chamber is also grateful for the assistance of chamber members, Dave Latham, Cy Hutcherson, Jeff McDonald and Rob Garrison for removing the old carpet. Special thanks to those neighbors that helped remove and then replace furniture.



Charlie Allen and Tim Crabtree laid new carpet in the Jessamine County Chamber of Commerce's conference room thanks to the generosity of Floor Coverings International.

Community Banking Is Our Specialty!



Your personal banking team (left to right): Jeremy Teater, Linda Lowry, Richard Collins, Susan Clem, Melissa Woodrum, Pam Jarvis, Jeff Ball, Linda Moores

**The people you know are now at
Citizens Commerce National Bank**

NOW OPEN in Nicholasville!

We're a real community bank that believes in serving you the best way we can right here in Nicholasville, so we've hired some familiar faces with many years of banking experience. We're your friends and your neighbors.

Come to a bank where you'll always see a familiar face, Citizens Commerce National Bank, Nicholasville's newest community bank.

Lobby Hours: Monday - Thursday: 9am-4pm
Friday: 9am-5pm
Saturday: 9am-12 noon

CITIZENS COMMERCE
NATIONAL BANK

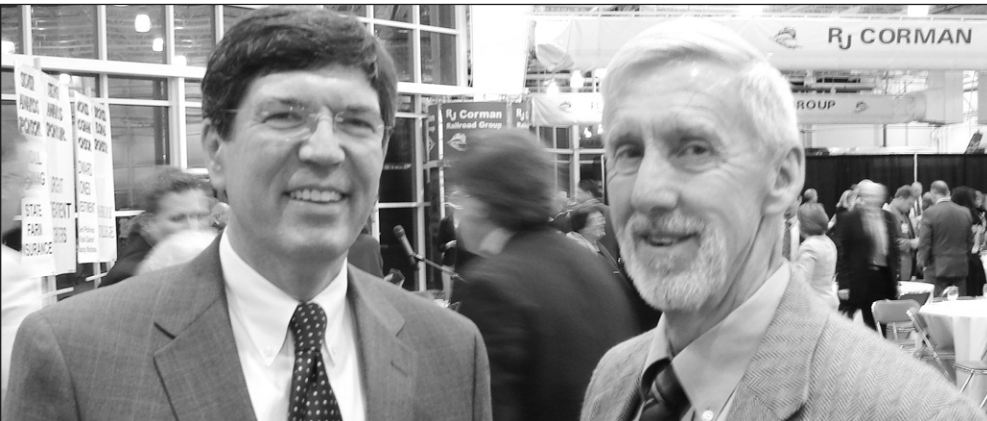
Call us today **859.887.4111**
Chamber Office Center, 506 North Main Street
Nicholasville • www.citizenscommerce.com



Member
FDIC

Awarding EXCELLENCE

25th annual awards banquet a success



Lexington Mayor Jim Newberry posed with Jessamine County Magistrate George Dean during the 25th annual Jessamine Chamber of Commerce Meeting and Award Banquet held April 21. See page 7 for more photographs.



Bluegrass Regional
Foot and Ankle Associates

Medical and Surgical Care of the Foot and Ankle

- Diabetic • Arthritis Foot & Ankle Care • Hammertoes • Warts • Ingrown Nails • Heel & Bone Spurs • Reconstructive Foot & Ankle Surgery • Sprains & Fractures • Bunions • Skin & Nail Conditions

Call ahead to schedule an appointment for your evaluation.
(859) 887-8026 • 506 North Main Street, Nicholasville



Daniel Albertson
A.R.N.P.

Paul Krestik
D.P.M.



Royal Manor Nursing Facility

- Skilled, Intermediate and Personal Care
- Licensed Rehab Services

100 Sparks Avenue, Nicholasville, KY 40356
859-885-4171

"Over 30 Years of Service to Nicholasville"

THE JESSAMINE JOURNAL

It's The News You Can Use!



**Subscribe
to The Jessamine Journal
for the news in and around
Jessamine County.**

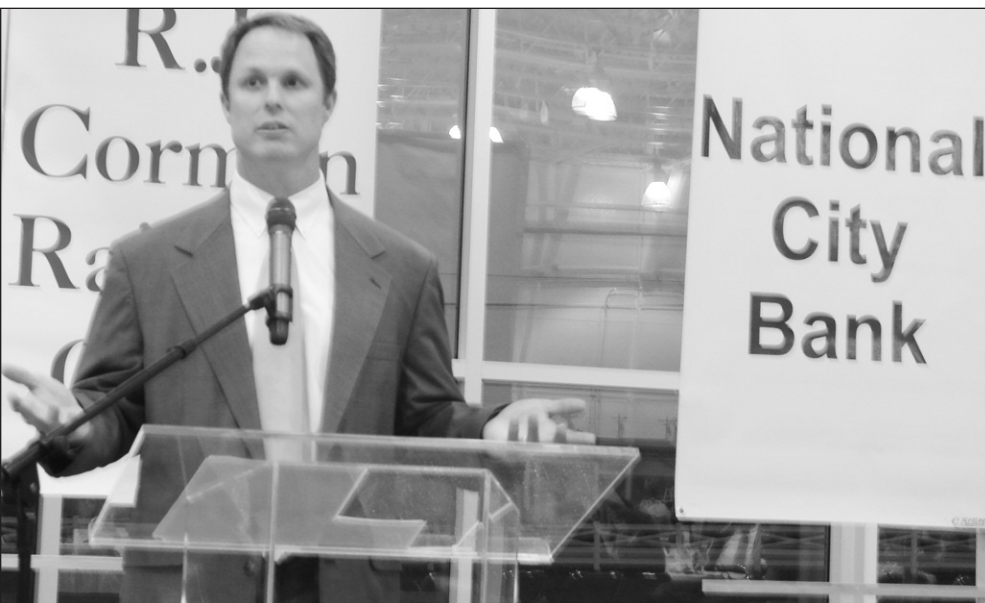
YEARLY RATES

Jessamine and adjoining counties \$30
In Kentucky \$36 Other States \$45

The Jessamine Journal
507 North Main Street, Nicholasville, KY 40356
859-885-5381 • Fax: 887-2966



From left: County Judge-Executive Neal Cassity, State Rep. Bob Damron, Ned Shee of the Lexington-Fayette County Government, Lexington Mayor Jim Newberry, Nicholasville Mayor Russ Meyer and Wilmore Mayor Harold Rainwater posed together during the annual meeting and awards banquet held at the RJ Corman Hanger.



Incoming Jessamine County Chamber of Commerce president Chris Horne spoke during the annual awards banquet.



From left: Jessamine County Magistrate Gary Morgan, State Sen. Tom Buford and Magistrate Tim Vaughn were among the attendees of the annual Chamber meeting and awards banquet.



JESSAMINE COUNTY ICE STORM 2009

January 28, 2009

Emergency Declared in Jessamine County

200 Miles of County Road

11 County Road Employees

Emergency Shelter Opened,
Staffed by Red Cross, Salvation Army & Volunteers

2 Debris Drop-off Sites Opened on January 31

152 Tons of Salt Used First Week on County Roads

4 Teleconferences with State/FEMA

4829 Man Hours by County Road Department

7000 Loads of Debris from Jessamine County

83,000 Cubic Yards of Debris from Jessamine County

20,800 Cubic Yards of Mulch from Jessamine County
Recycled Into Charcoal Products and Landscape Material

On behalf of the Jessamine County Fiscal Court, I would like to thank the residents of Jessamine County for their cooperation, patience and assistance during the 2009 Ice Storm.

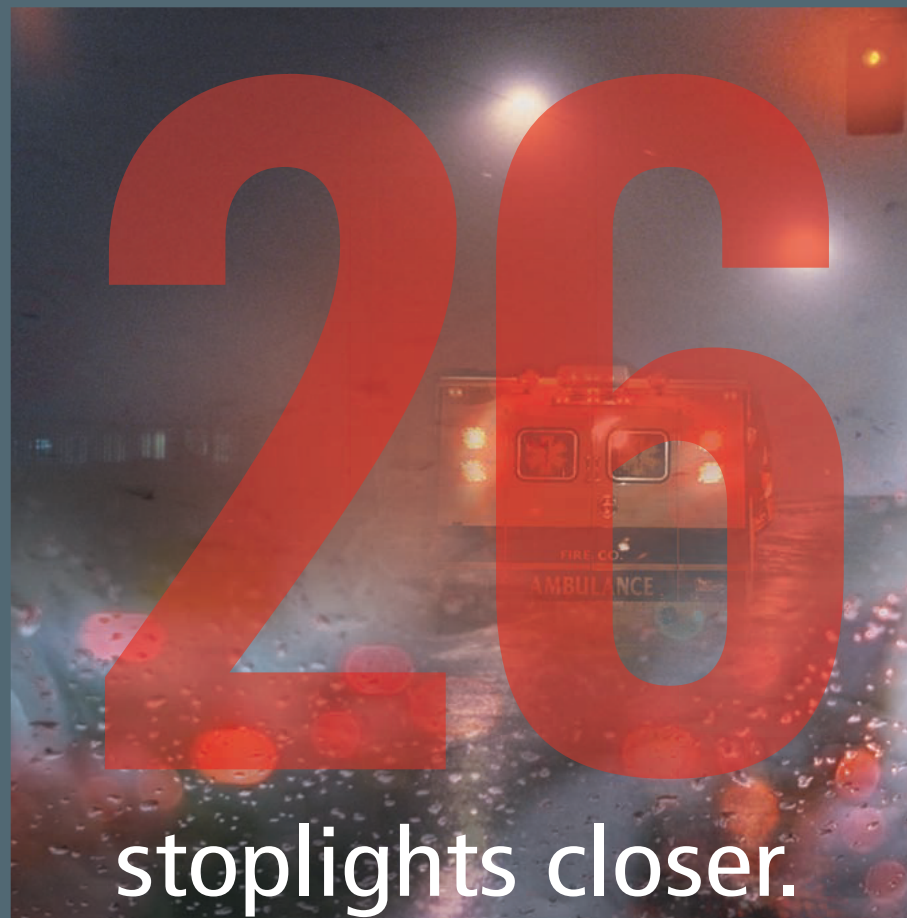
Thank you to the employees of the City of Nicholasville, City of Wilmore, State Highway Department and Jessamine Co. Fiscal Court for your outstanding performance during extreme adverse conditions.

Thank you to the Red Cross, the Salvation Army and the many businesses and individuals who donated time, food and supplies.

Special thanks to Jessamine Co. EMA Director John V. Carpenter for his leadership during the state-declared disaster.

Wm. Neal Cassity,
Jessamine Co. Judge/Executive

Announcing advanced emergency care.



stoplights closer.

In an emergency, every minute counts. That's why you shouldn't spend them going through 26 stop lights and traffic to get to the closest Lexington hospital.

Fortunately for the residents of Jessamine County and surrounding areas, there is a better option. The Saint Joseph – Jessamine RJ Corman Ambulatory Care Center is now open, providing 24-hour emergency care. Staffed with

experienced physicians and specialists, and featuring the latest medical technology, Saint Joseph – Jessamine is equipped to handle everything from bumps and bruises to real life threatening conditions. So in addition to saving you time, we could even save your life.

In an emergency, remember Saint Joseph - Jessamine.

1250 Keene Road | Nicholasville, KY

General Information: 859.887.4100

† CATHOLIC HEALTH
INITIATIVES®

Saint Joseph - Jessamine

**RJ CORMAN
AMBULATORY CARE CENTER**